

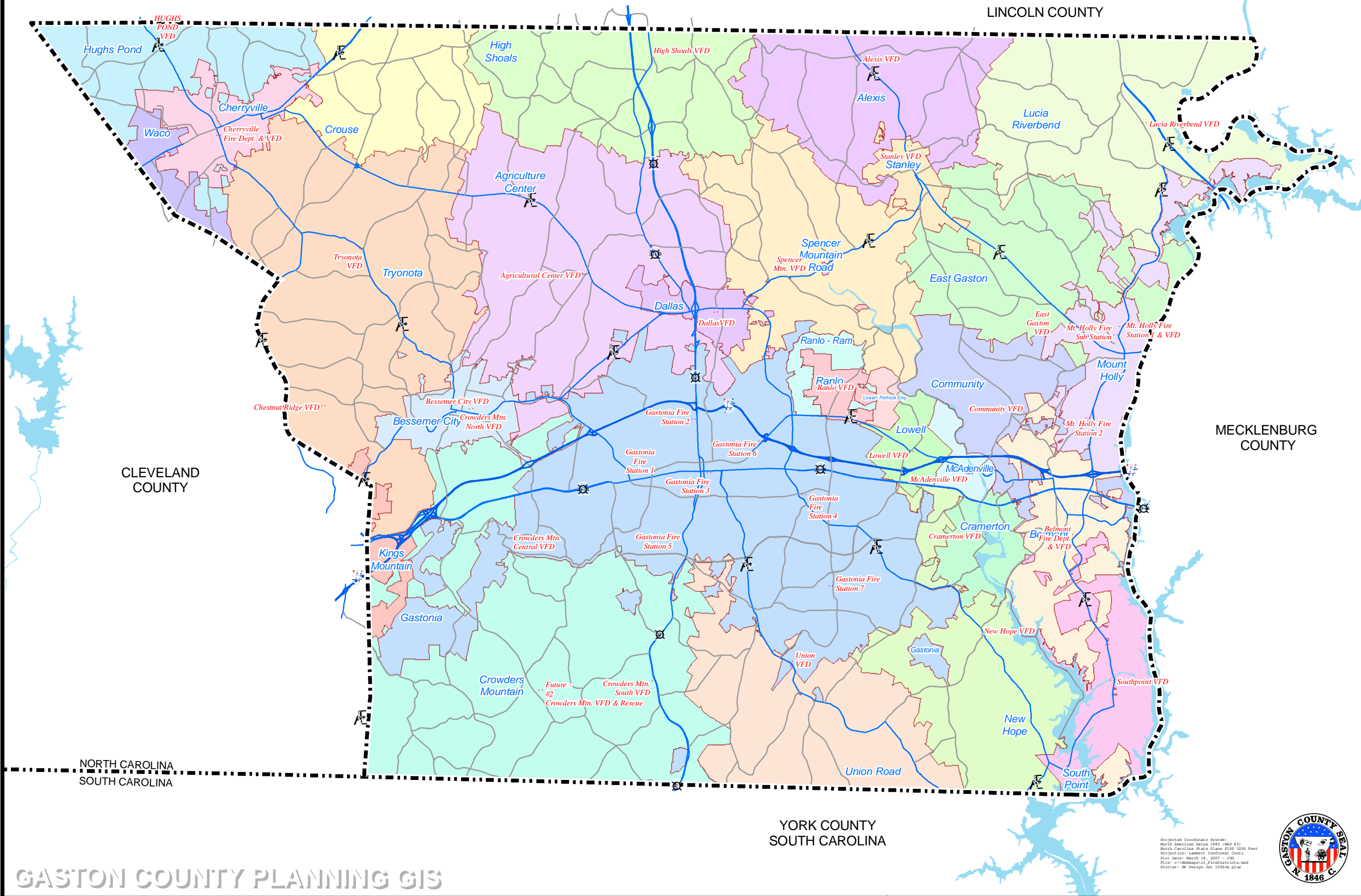


GASTON COUNTY FIRE DISTRICTS



GASTON COUNTY
NORTH CAROLINA

- Agriculture Center
- Alexis
- Belmont
- Bessemer City
- Cherryville
- Community
- Cramerton
- Crouse
- Crowders Mountain
- Dallas
- East Gaston
- Gastonia
- High Shoals
- Hughs Pond
- Kings Mountain
- Lowell
- Lowell - Pinhook Smy
- Lucia Riverbend
- McAdenville
- Mount Holly
- New Hope
- Ranlo
- Ranlo - Ram
- South Point
- Spencer Mountain Road
- Stanley
- Tryonota
- Union Road
- Waco
- Fire Districts

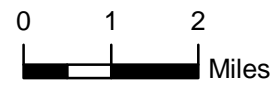


Map compiled by Gaston County Planning GIS Services. Transportation, Hydrography and other major surface features shown were automated from 2000 - 1:2400 scale orthophotography. (NC State Plane Coordinate System NAD 83) by Land Records. Property Parcels automated by Gaston County Tax Department from recorded deeds and available photography.

Although strict accuracy standards have been employed in the compilation of this map, Gaston County does not make or imply any warranties or assume any responsibility for the information presented on this map or its use.

This map may not be resold or otherwise used for trade or commercial purposes without the expressed written consent of Gaston County, in accordance with North Carolina General Statute 132-10.

Created by: Planning GIS - JGG.
Date: March 14, 2007 - 10:22 a.m.



GASTON COUNTY PLANNING GIS

Projected Coordinate System:
North American Datum 1983 (NAD 83)
North Carolina State Plane FIPS 3200 Feet
Projection: Lambert Conformal Conic
Units: Feet
Date: March 14, 2007 - 10:22
File: c:\webmaps\fire\fire\fire.dwg
Plotter: HP DesignJet 1590cm plotter

