



**GASTON COUNTY  
NORTH CAROLINA**

**Legend**

- County Line
- State Line
- Major Roadways
- Rivers
- Ponds
- Lakes
- City Areas
- City ETJ Areas

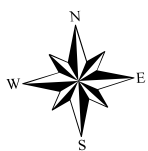
Map compiled by the Gaston County Planning & Development Services. Transportation, Hydrography and other major surface features shown were automated from 2005 - 1:2400 scale orthophotography, (NC State Plane Coordinate System NAD 83). Property Parcels automated by Gaston County Tax Department from recorded deeds and available photography.

Although strict accuracy standards have been employed in the compilation of this map, Gaston County does not make or imply any warranties or assume any responsibility for the information presented on this map or its use.

This map may not be resold or otherwise used for trade or commercial purposes without the expressed written consent of Gaston County, in accordance with North Carolina General Statute 132-10.

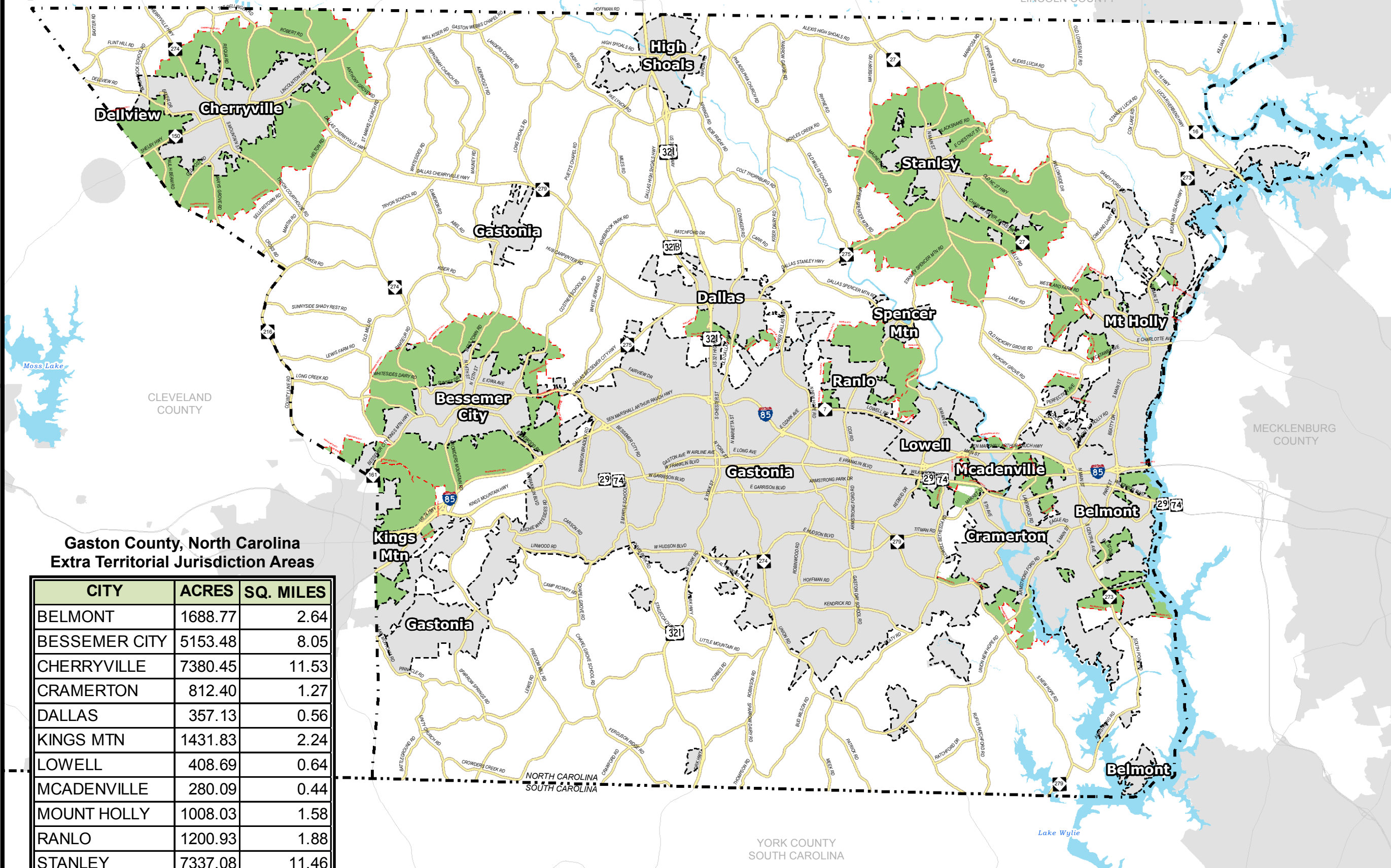
Created by: Planning GIS - JGG.  
Date: February 28, 2013

State of North Carolina



0 1 2 3 Miles

# MUNICIPAL EXTRA TERRITORIAL JURISDICTION AREAS



**Gaston County, North Carolina  
Extra Territorial Jurisdiction Areas**

CITY	ACRES	SQ. MILES
BELMONT	1688.77	2.64
BESSEMER CITY	5153.48	8.05
CHERRYVILLE	7380.45	11.53
CRAMERTON	812.40	1.27
DALLAS	357.13	0.56
KINGS MTN	1431.83	2.24
LOWELL	408.69	0.64
MCADENVILLE	280.09	0.44
MOUNT HOLLY	1008.03	1.58
RANLO	1200.93	1.88
STANLEY	7337.08	11.46